

Milan

MLN HALF 6748-6749-6750



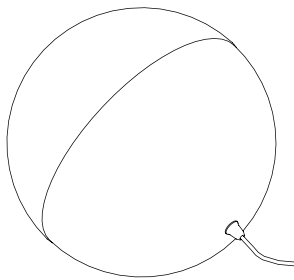
18321/0

DATOS TÉCNICOS

LUMINARIA PORTÁTIL CON CORDÓN DE 2.8m DE LONGITUD.
CORRIENTE DE ENTRADA AC 230V 50-60Hz.
1 CASQUILLO E27 PARA LÁMPARA REGULABLE MÁXIMO Ø150mm.

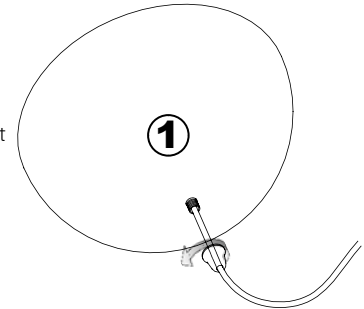
TECHNICAL DATA

PORTABLE LUMINAIRE WITH CORD 2.8m LONG.
INPUT CURRENT AC 230V 50-60Hz.
1 E27 SOCKET FOR MAXIMUM Ø150mm DIMMABLE LAMP.



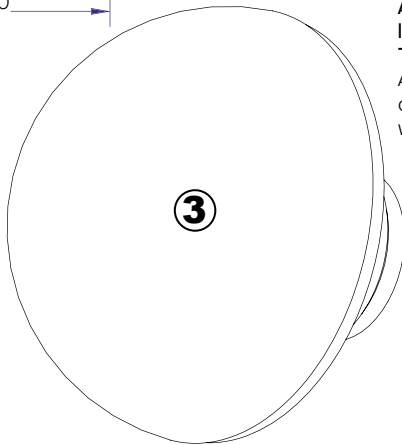
Ø350

Desenroscar con la mano para liberar el conjunto de soporte de sujeción del vidrio.
Unscrew by hand to release the glass support bracket assembly.

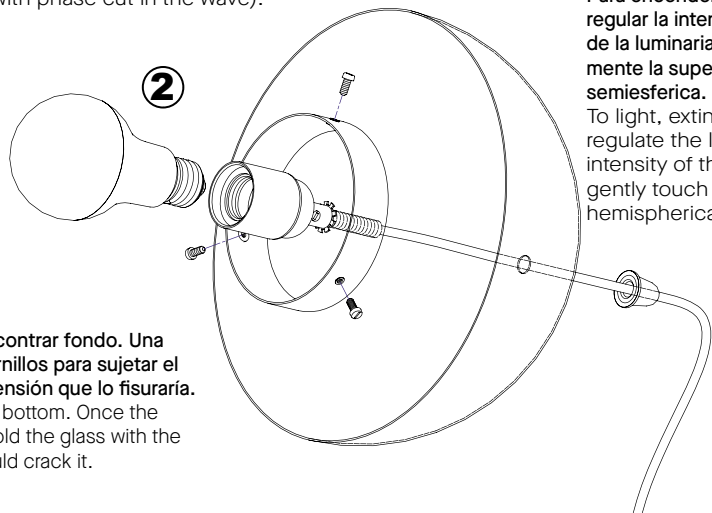


1

Acceder al portalámparas para la colocación de lámpara E27 de intensidad regulable UNICAMENTE (compatible con corte de fase en la onda)
Access to the lamp holder for the installation of E27 dimming lamp SINGLE (compatible with phase cut in the wave).



3



2

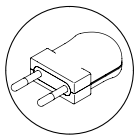
Para encender ,apagar y regular la intensidad luminosa de la luminaria, toque suavemente la superficie metálica semiesférica.
To light, extinguish and regulate the luminous intensity of the luminaire, gently touch the metallic hemispherical surface.

Aflojar los tornillos de plástico para colocar el vidrio hasta encontrar fondo. Una vez colocado el vidrio en la posición adecuada apretar los tornillos para sujetar el vidrio con la fuerza de la mano para protegerlo de excesiva tensión que lo fisuraría.
Loosen the plastic screws to place the glass until you find the bottom. Once the glass is placed in the proper position, tighten the screws to hold the glass with the force of the hand to protect it from excessive tension that would crack it.

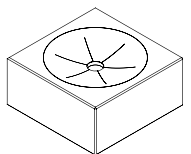
Accesorios compatibles

Compatible accessories

Soportes para luminarias portátiles.
Supports for portable luminaires.

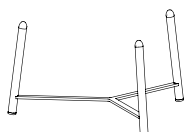


Clavija de enchufe incluida.
Plug included.



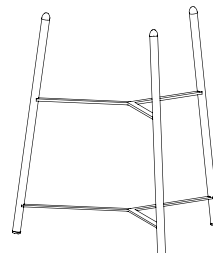
80

Ref. 4765, 4771



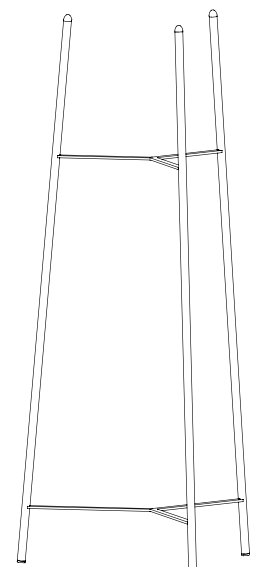
175

Ref. 4753, 4754



412

Ref. 4757, 4758



1012

Ref. 4761, 4762